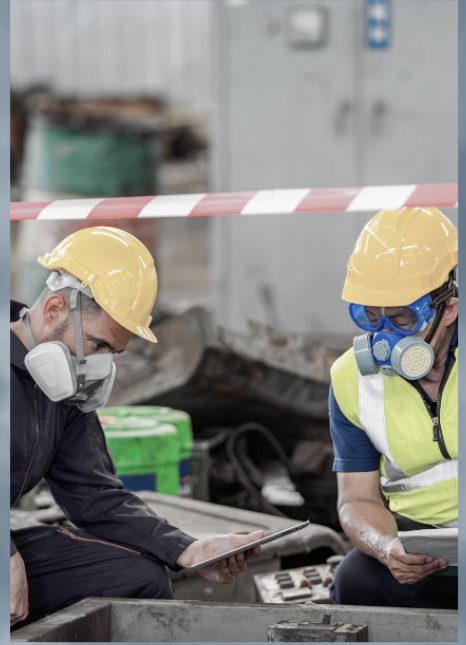


The Official Brazoria County DISASTER GUIDE



Preparedness Saves Lives
Are You Prepared?

BRAZORIA COUNTY PREPARED

Dear Citizens of Brazoria County,

As we navigate through another year, it's important to take a moment to ensure your readiness for potential disasters.

I urge you to spare a few minutes to review this Disaster and Hurricane Guide. Within its pages, lies invaluable information that could potentially save your life or the lives of your loved ones. Understanding your vulnerabilities and knowing the necessary actions to take in the face of an emergency is crucial.

Stay vigilant and stay informed. It's essential to rely on reliable information sources to make well-informed decisions. Preparedness is the cornerstone of safeguarding your family and property in times of crisis.

Moreover, if you or someone you know will require transportation assistance during a mandatory evacuation, I encourage you to take proactive steps now. Register for the State of Texas Emergency Assistance Registry (S.T.E.A.R) by simply dialing 2-1-1. While registration isn't mandatory, it ensures preparedness and peace of mind in case transportation becomes necessary.

Together, let's be proactive and vigilant in the face of potential disasters.

Be Prepared and Stay Safe, Brazoria County!

Sincerely,



L.M. "Matt" Sebesta, Jr.
Brazoria County Judge



BRAZORIA COUNTY Official Communication and Information



Facebook.com/BrazoriaCo



@BrazoriaCounty



@BrazoriaCounty



Brazoria County



pio@brazoriacountytx.gov



www.brazoriacountytx.gov

24 Hour Emergency Event Hotline
Numbers:
979-864-1064



Download the
"Brazoria County Emergency Mgmt." App.
Available on the App Store or Google Play.



Download the Brazoria County Emergency Mgmt. App Today!

HELPING TO KEEP YOUR LOVED ONES SAFE

When it comes to an emergency situation, having a plan can help protect you and your loved ones. That is why Brazoria County has developed a mobile app that helps its citizens stay informed during and after a disaster. You will receive the latest updates and necessary information on evacuation routes, shelters, available emergency services and much more, should a disaster strike.

Download the Brazoria County Emergency Mgmt. App and get all the information you need in one easy-to-use app.

Key Features:

- ➔ Receive latest alerts and emergency notifications from Brazoria County.
- ➔ Find out about the nearest emergency shelters and special services in your area.
- ➔ A library of resources on your phone.
- ➔ Find out about the current river levels.
- ➔ Register for STEAR.



TABLE OF CONTENTS

GETTING PREPARED

- 2 Prepare Your Home
- 2 Prepare Your Vehicle
- 3 Family Disaster Check List
- 4 Marine and Businesses Prep.
- 5 Prepare for a Flood

IF YOU HAVE YOUR OWN TRANSPORTATION

- 6 Evacuation Plans
- 7 Evacuation Zones
- 8 Evacuating Pets
- 8 Evacuating Livestock
- 9 Emergency Shelters

IF YOU NEED A RIDE OUT OF TOWN

- 10 STEAR Registry (2-1-1)
- 10 Evacuation HUBS in Brazoria County
- 11 Evacuation HUB Transportation Information

ALL HAZARD INFORMATION

- 12 Severe Weather
- 12 Flooding
- 12 Downed Power Lines
- 13 Rip Currents
- 13 Heat Safety
- 13 Cold Weather Safety
- 14 After a Hazardous Materials Incident

VOLUNTEER OPPORTUNITIES

- 15 Skywarn
- 15 Volunteer Opportunities

RETURNING HOME

- 16 Safety Tips and Information

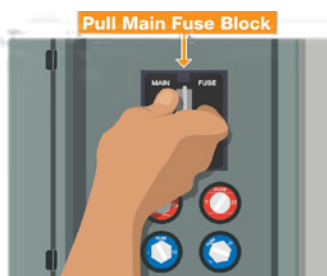
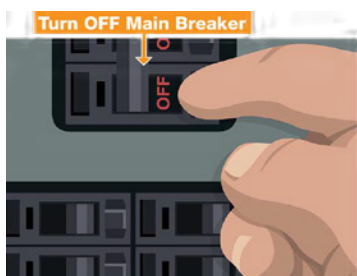
Prepare Your Home



- Install commercial shutters or prepare 5/8 inch plywood panels for your windows.
- Reinforce garage doors so that they are able to withstand high winds. Garage doors are frequently the first feature in a home to fail.
- Trim all dead wood, weak, and overhanging branches from trees as they could damage your or your neighbor's property.

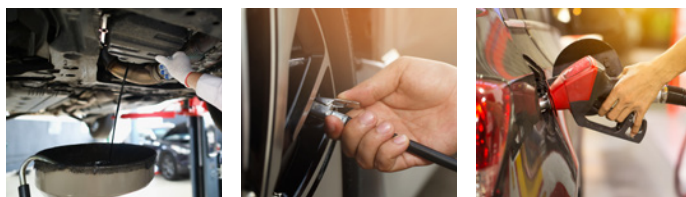
Before you leave

- Move outside items to safety, such as patio furniture, plants, and grills.
- Put valuable documents in waterproof containers and take them with you when you evacuate.
- Turn off electricity at the main circuit breaker or fuse box.
- Turn off gas at the appliances.
- Remove perishable items from your refrigerator and freezer.
- Make a final walk-through inspection before closing the door.
- Close all interior doors in your home.



Prepare Your Vehicle

- Fill up with fuel before you leave town. It's smart to keep your tank at least half full during the entire hurricane season.
- Check your vehicle's fluid levels and ensure there is adequate coolant in the radiator.
- Check your tire pressure.
- Ensure you have a jack, a lug wrench, and know where they are in the vehicle.
- Carry enough water and non-perishable food for you and your passengers in case you become stranded.
- Have a working flashlight and extra batteries.
- If you are stranded, stay with your vehicle and use emergency flashers. Tie a white cloth on the antenna or door handle and raise the hood.
- Motorists should fill their tanks before evacuating.
- TxDOT works with the private sector to assure fuel availability on designated evacuations routes only.
- TxDOT courtesy vehicles will be patrolling designated evacuation routes for those stranded.



If you're traveling with children be sure to pack items to help keep them entertained

- Reading materials, puzzle, games, coloring books, and electronics with extra chargers and batteries.
- Fun road games like Highway BINGO and I Spy.
- Go Online to find lists and ideas.
- Low sugar snacks and sugar free drinks.
- Change of clothes.



Family Disaster Checklist

Essentials

- ☐ Cell phone and charger
- ☐ This guide
- ☐ Battery-operated radio
- ☐ Flashlight
- ☐ Extra Batteries
- ☐ Cash
- ☐ Map of the area

Baby Needs

- ☐ Formula
- ☐ Diapers
- ☐ Bottles
- ☐ Medication
- ☐ Powdered milk

Medical Needs

- ☐ Insulin
- ☐ Prescription drugs in original containers
- ☐ Heart and high blood pressure needs
- ☐ Denture needs
- ☐ Extra eye glasses
- ☐ Contact lenses and supplies
- ☐ Doctor's phone numbers

Clothing & Bedding

- ☐ Plastic garbage bags, ties
- ☐ Sunglasses
- ☐ Rain gear
- ☐ Sturdy shoes or work boots
- ☐ Blankets or sleeping bags
- ☐ Complete change of clothing and footwear per person

Cooking Preparation

- ☐ Mess kits or paper cups, plates and plastic utensils
- ☐ Non-electric can opener, utility knife
- ☐ Barbecue for outdoor use only with charcoal and lighter, or sterno stove
- ☐ Pot or pan
- ☐ Manual can opener
- ☐ Barbecue utensils and cooking utensils

Entertainment

- ☐ Games & books

Safety

- ☐ First Aid Kit (one for your home and one for each car)
- ☐ Fire Extinguisher
- ☐ Whistle
- ☐ Compass

Food

- ☐ Minimum 7-day supply of nonperishable food that requires no refrigeration or preparation, and little or no water
- ☐ Dry cereal
- ☐ Peanut butter
- ☐ Canned fruits
- ☐ Canned vegetables
- ☐ Canned juice
- ☐ Ready-to-eat canned meats
- ☐ Ready-to-eat soups (not concentrated)
- ☐ Quick energy snacks
- ☐ Graham crackers

Important documents

- ☐ Important telephone numbers, i.e. family members, doctor, etc.
- ☐ Record of bank account numbers
- ☐ Family records (birth, marriage, death certificates)
- ☐ Inventory of household valuables with digital pictures and video
- ☐ Copy of will, insurance policies
- ☐ Records of credit card account numbers and companies
- ☐ Current Utility Bills

Pet Needs

- ☐ Food
- ☐ Leash
- ☐ Collar/harness
- ☐ Carrier
- ☐ Non-tip food and water containers
- ☐ Pet health records
- ☐ Pet medication

Water

- ☐ 1 gallon per person, per day, minimum, in a food-grade, plastic container
- ☐ Additional water for sanitation

Sanitation

- ☐ Disinfectant
- ☐ Household chlorine bleach
- ☐ Soap, liquid detergent
- ☐ Toilet paper, towelettes, paper towels
- ☐ Personal hygiene items
- ☐ Cloth towels (at least 3)
- ☐ Feminine supplies
- ☐ Plastic bucket with tight lid
- ☐ Plastic garbage bags, ties (for personal sanitation use)
- ☐ Hand Sanitizer

Supplies

- ☐ Insect Repellent
- ☐ Sunscreen
- ☐ Aluminum Foil
- ☐ Paper, Pencil
- ☐ Plastic sheeting and tarp
- ☐ Medicine dropper
- ☐ Needles, thread
- ☐ Matches in a waterproof container
- ☐ Plastic storage containers
- ☐ Ziplock bags

Tools

- ☐ Assorted nails, wood screws
- ☐ Pliers, screwdriver, hammer
- ☐ Heavy rope
- ☐ Tape, duct tape and plumber's tape or strap iron
- ☐ Patch kit and can of seal-in-air for tires
- ☐ Shut off wrench to turn off household gas & water

You may include

- ☐ Family photos
- ☐ An external hard drive
- ☐ Jewelry

Boat Marine Preparation

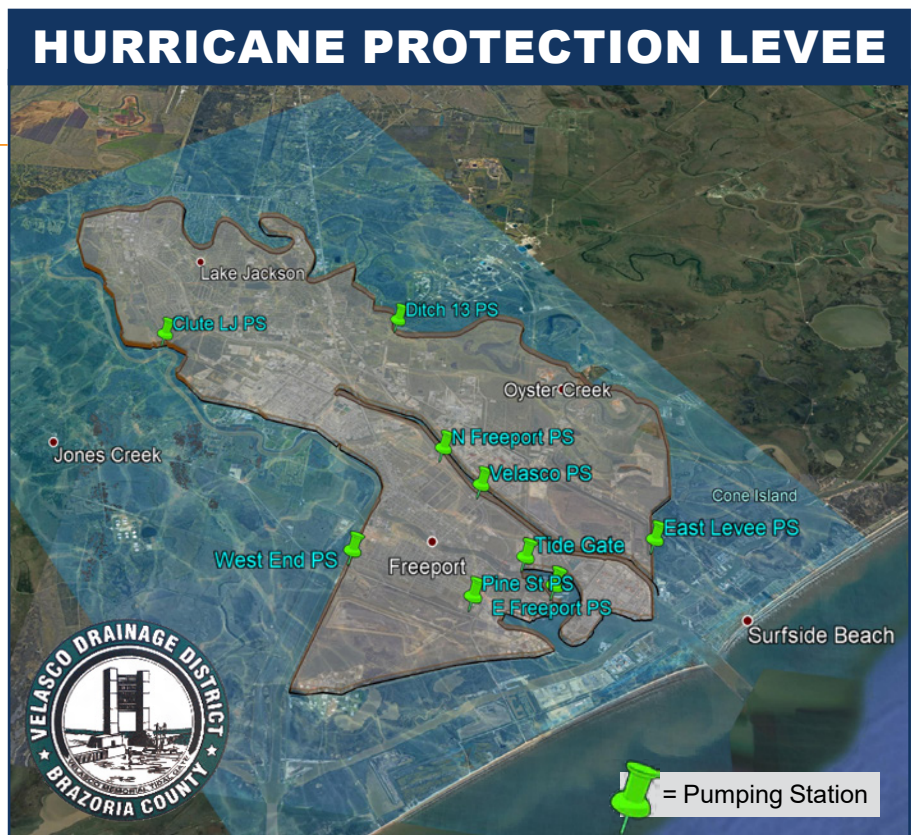
- Check your marina contract for policies and procedures for hurricanes.
- Check with the manufacturer for proper ways to secure your boat during a storm.
- Consider moving arrangements well in advance of an approaching storm.
- Trailerable boats should be removed from the water and securely stored at least 48-hours before a hurricane is expected to make landfall.
- Purchase necessary hurricane materials such as additional mooring lines, crew anchors, fenders, fender boards, chafing gear, and anchors.
- Safe storm moorings should consist of good condition ropes of sufficient diameter and length, with at least three or four substantial anchor points.
- Do not moor parallel to bank. Receding tides often capsize boats in this type of mooring.

Business & Employee Preparation

- Identify and protect vital records. Backup and store key files off site.
- Protect electronic equipment from possible water damage.
- Have extra cash and blank checks in case extra money is needed after the storm.
- Identify a safe room for employees who must remain in the building.
- Develop a 24-hour emergency contact list with phone numbers for employees to check in and receive company information.
- Establish a temporary location for business operations in case your facility is damaged.
- Give employees enough time to secure their homes and families.
- Consider paying employees before they leave to prepare their homes.

Do you live in a flood-prone area?

- Determine if you live behind a levee, find out who owns the levee near you, and do your part to promote levee safety.
- Visualize the impact if your levee is over-topped or breached and your neighborhood is flooded.
- Develop an emergency action plan to follow in case of flooding.
- Take advance precautions to reduce potential flood damage.
- Support funding initiatives for levee improvement projects.



How to prepare for a flood

Be Informed

- Know if you are located in a flood-prone area and your flood risk.
- Stay informed through local media, trusted social media sites, the Brazoria County Emergency Management App, city and county websites.

Buy Flood Insurance

- Remember, there is a 30 day waiting period before newly purchased flood insurance goes into effect. Don't wait!
- Most homeowners insurance policies DO NOT cover flooding.
- To purchase flood insurance, call your insurance company or agent.
- If you need help finding a provider, go to FloodSmart.gov/flood-insurance-provider or call National Flood Insurance Program (NFIP) at 877-336-2627.

If you have pets or livestock

- Consider precautionary evacuation of your animals. Waiting until the last minute could be fatal for them and dangerous for you.
- Move livestock to higher ground.
- Don't leave companion animals behind if you evacuate your home. Tying up animals can cause the animal to suffer unnecessarily and be vulnerable to the elements and possible drowning.
- Prepare an animal emergency kit. The kit should include food, bowl, leash, crate, bed, toys and any medication your animal may need.

Protect your home

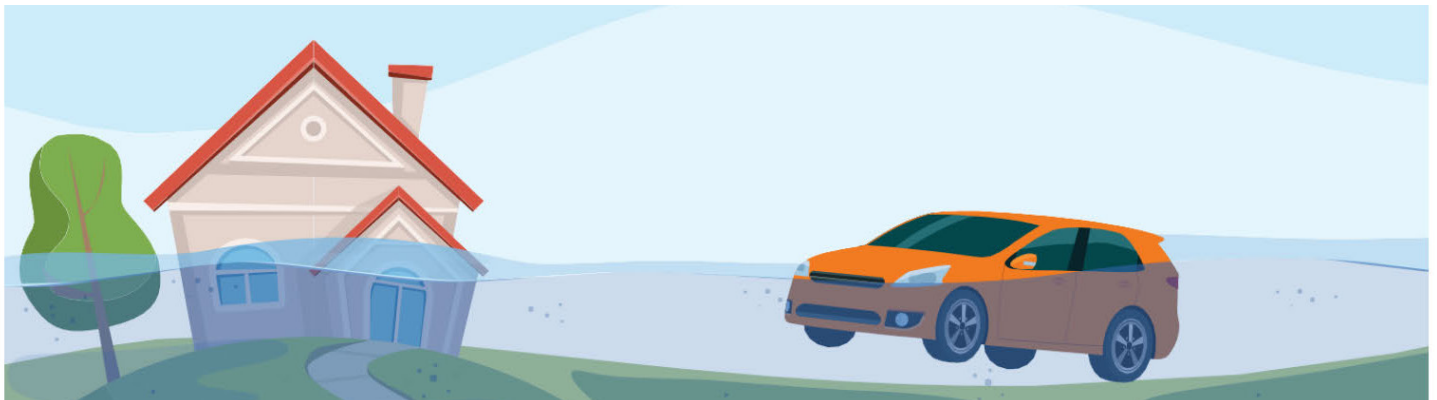
- Clear gutters and drains. Keep gutter and drainage systems clear to carry water away from your home.
- Catalog possessions. Using a digital camcorder or camera, create a home inventory for insurance. Store digital files on a USB drive and take it with you during an evacuation event.
- Raise furniture and move expensive items to a safe location. Take irreplaceable items such as photographs and important documents with you if asked to evacuate.
- Anchor your fuel tanks. Unanchored tanks can float, rupture, and release fuel.
- Turn off your electricity at the breaker box and unplug sensitive equipment, such as computers, TV's, etc. before evacuating your home.

Be prepared to evacuate

- If Mandatory Evacuation is issued by officials, leave the area for your safety and the safety of your family. REMEMBER, take your animals with you.
- For your safety, you will not be able to re-enter an evacuated area until area is deemed safe to return by local officials.

Turn around don't drown

- Do not drive into or go near flooded streets or areas.
- Do not go around safety barriers or barricades.



Evacuation Plans

How do I know when to evacuate?

Don't wait! It is NOT safe to wait. Plan to leave early. Mandatory evacuation orders will come from your local officials. Evacuations will be based on zip codes. Please be prepared to leave immediately. See pages 18–20 for specific information pertaining to your city's contact information.

Should I evacuate?

Do not wait until a mandatory evacuation is issued. Monitor conditions and leave early to avoid heavy traffic. Hurricanes and disasters can be extremely unpredictable and can become much more dangerous in a matter of hours.

Where should I go?

You may evacuate to any city you choose. Brazoria County residents who need shelter should go to the state designated location. If you do not have hotel reservations or family you can stay with, you may evacuate to the state designated shelters for Brazoria County.



What route should I take?

There are no mandatory routes you must take when evacuating from your city. In fact, there are several different routes you may take. When weather is good, take your family on an outing to check routes and become familiar with roadways and fuel locations.

The State has designated evacuation routes: SH-36, SH-288, SH-6, I-45, SH-290, HWY-59. If you choose to take an alternate route, essential services such as food, fuel, etc. are not guaranteed. Depending on the strength of the storm, contra-flow lanes might be open on SH-45, I-10, and SH-290 thirty-six (36) hours prior to the arrival of gale force winds. Plan your evacuation routes carefully (having more than one route planned).



If you choose not to evacuate during a mandatory evacuation:

- **NO SHELTERS** will be open in Brazoria County.
- **NO SERVICES** will be available to you (sewer, water, electricity, etc).
- Hospitals will close.
- Ambulances will not run.
- **Police and fire cannot respond until the storm passes.**

Should I carry food and drinks in my car?

Yes! Stopping for food or drinks during a large scale evacuation may significantly delay you in getting to your destination. Some restaurants and stores along hurricane routes may be closed and those that are open are likely to be very crowded. Additionally, once you leave the evacuation route to purchase food or drinks, it may be difficult to re-enter the flow of traffic.

What can I do to help others?

Check on friends, neighbors and assist them if you can to make sure they can evacuate. If you cannot, help them get in touch with the local emergency management office.

When evacuating you should:

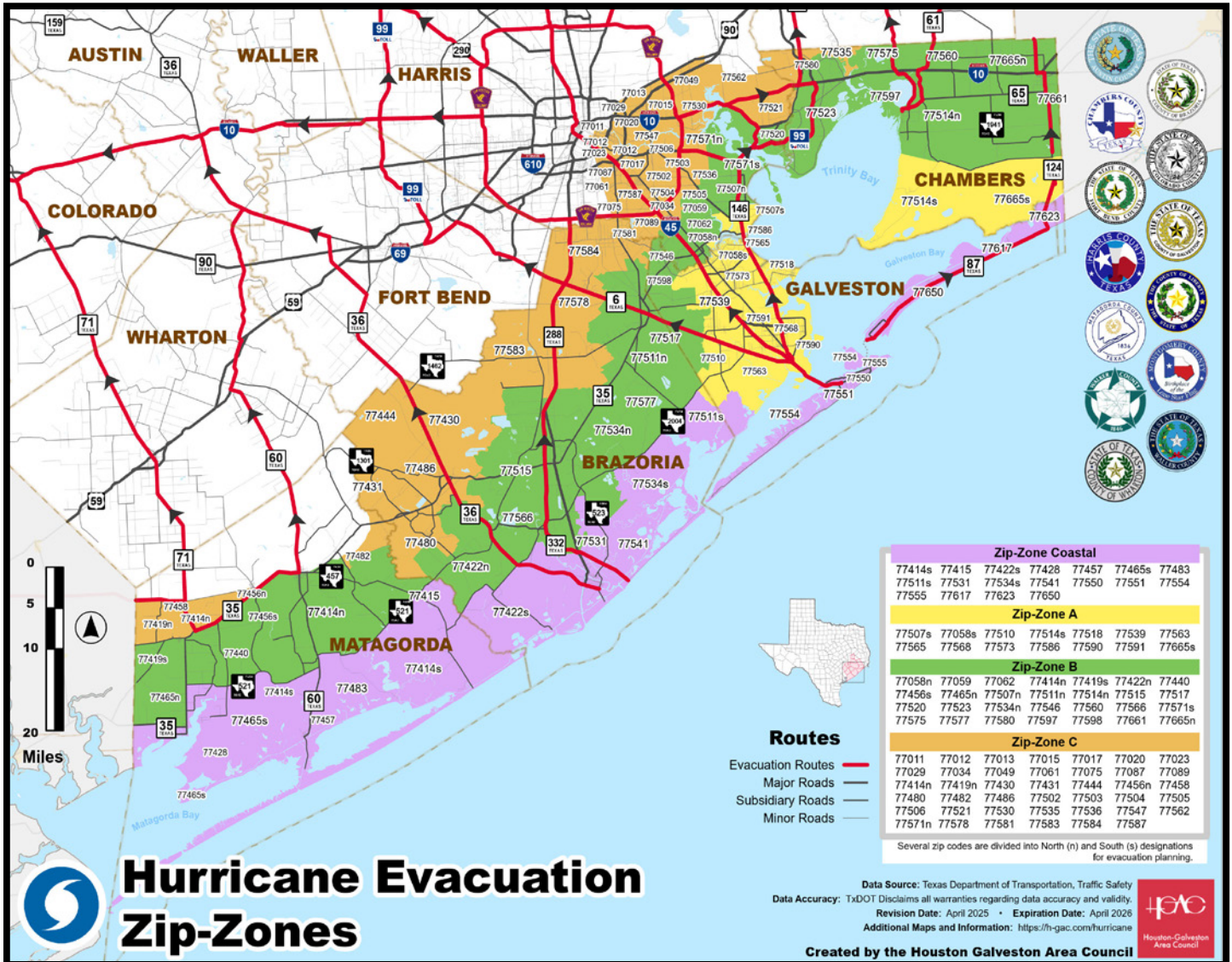
- **Leave early and avoid heavy traffic.**
- Coordinate your departure with the people who will be traveling with you.
- Notify an out-of-area person of your evacuation plans.
- Make arrangements for your pets.
- Pack your disaster supply kit into your vehicle.
- Secure your home.
- Double check your evacuation route and leave.



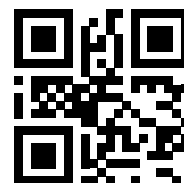
IF YOU HAVE YOUR OWN TRANSPORTATION

Know Your Evacuation Zone

Mandatory evacuations will be based on zip codes. Be prepared to leave immediately after your zip code is called.



Scan to check COUNTY road conditions online.



Scan to check STATE road conditions online.

www.drivetexas.org

1-800-452-9292

Evacuating Pets

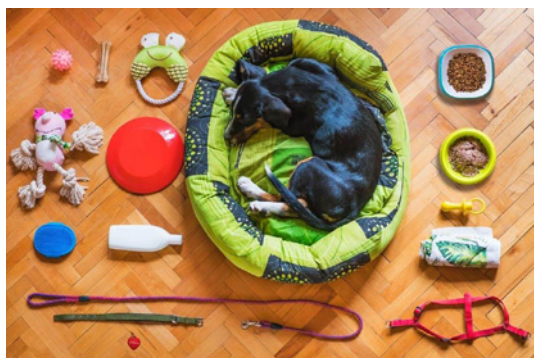


All food and medication must be provided by owner. If you have questions, please contact your local emergency manager (pages 18–20).

- As a general rule, pets will be sheltered separately with the exception of service animals that must stay with their owners.
- If you are evacuating to a hotel, ask about pet policies that might exist. Not all facilities accept animals.
- All animals must be housed in a sturdy plastic or metal cage.
- All food/medication must be provided by owner.

Important pet supplies:

- ☐ Medications
- ☐ Food and water
- ☐ Non-tip food and water containers
- ☐ Leash/collar, harness, and carrier
- ☐ Records of vaccinations
- ☐ Hand sanitizer
- ☐ Waste disposal bags
- ☐ Training pads
- ☐ Towel or blanket



Evacuating Livestock



Where to Go?

If you have friends or family who have a place to board your livestock, that is your best option. Public shelters are temporary, lasting maybe a few days. The state designated location can accommodate high value livestock, horses, show animals, youth animal projects, etc.

When evacuating livestock out of the county, contact AgriLife Extension (979) 864-1558 for livestock information and designated shelter locations. Livestock evacuation shelters provide **ONLY** shelter and water. Feed and hay are the owner's responsibility.



Brazoria County Livestock Evacuation Information:

Contact the Brazoria County AgriLife Extension Office at

979-864-1558

What to Expect in an Emergency Shelter

When disasters occur, the county or state may provide a safe refuge in temporary emergency shelters. These shelters can be located in schools, churches, office buildings or other facilities. General population shelters are stocked with basic need essentials, such as food, water, and a warm place to sleep. Keep in mind, a shelter will not be able to provide the same level of comforts of home or a hotel. Shelters can be noisy, crowded, boring, short-staffed, and are not secure for personal items. If you are able, staying with friends or relatives is a better choice.

Don't forget your animals supplies and necessities!



Photo provided by ASPCA

Items to Bring to an Emergency Shelter:

- Identification
- Important documents
- Blankets/sleeping bags, pillows
- Cards/games/books to pass the hours
- Cell phone and charger
- Medical equipment, i.e. oxygen/wheelchair
- Extra clothing
- Specialty snacks and juices for dietary needs
- Hygiene supplies
- Shower shoes
- Basic snacks
- Folding chairs
- Other comfort items as needed
- Pets **ONLY** in carriers
- Pet health records
- No alcohol or illegal drugs are allowed in public shelters.
- Padlocks for securing items
- Refer to page 3 for a full checklist





S.T.E.A.R. REGISTRY

State of Texas Emergency Assistance Registry

If you need a ride to safety during an emergency, register with STEAR today!

Do you or anyone you know need some assistance during an emergency event? The state of Texas presents the STEAR program. The STEAR program is a free registry that provides local emergency planners and emergency responders with additional information on the needs in their community. Texas communities use the registry information in different ways. Registering yourself in the STEAR registry **DOES NOT** guarantee that you will receive a specific service during an emergency. Registration is not a substitute for developing and maintaining your own family disaster plan.



Who Should Register?

- People with disabilities
- People who are medically fragile
- People with access and functional needs such as:
 - People who have limited mobility
 - People who have communication barriers
 - People who require additional medical assistance during an emergency event
 - People who require transportation assistance
 - People who require personal care assistance



How To Register?

- Register online at [State of Texas Emergency Assistance Registry](https://www.stear.org).
- Call 2-1-1 and a trained telephone operator will be able to take your information in minutes.



**REGISTER
NOW!**

Evacuation HUBS Transportation Information

What should I bring with me?

- Medications for at least 10 days
- Driver's license or state issued picture ID
- Sleeping pads or air mattresses
- Blankets or a sleeping bag for each person
- Robe & shower shoes with toiletries
- Books, cards, games and QUIET toys for children
- Snacks
- Five days worth of clothing
- No more than two pieces of luggage and one carry-on bag per person.
- **NO alcoholic beverages or illegal drugs are allowed in HUBs or on buses.**

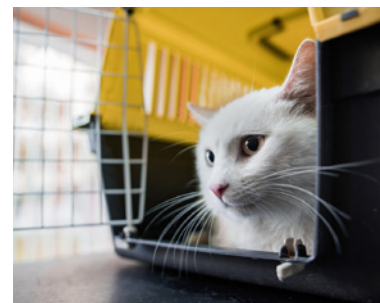
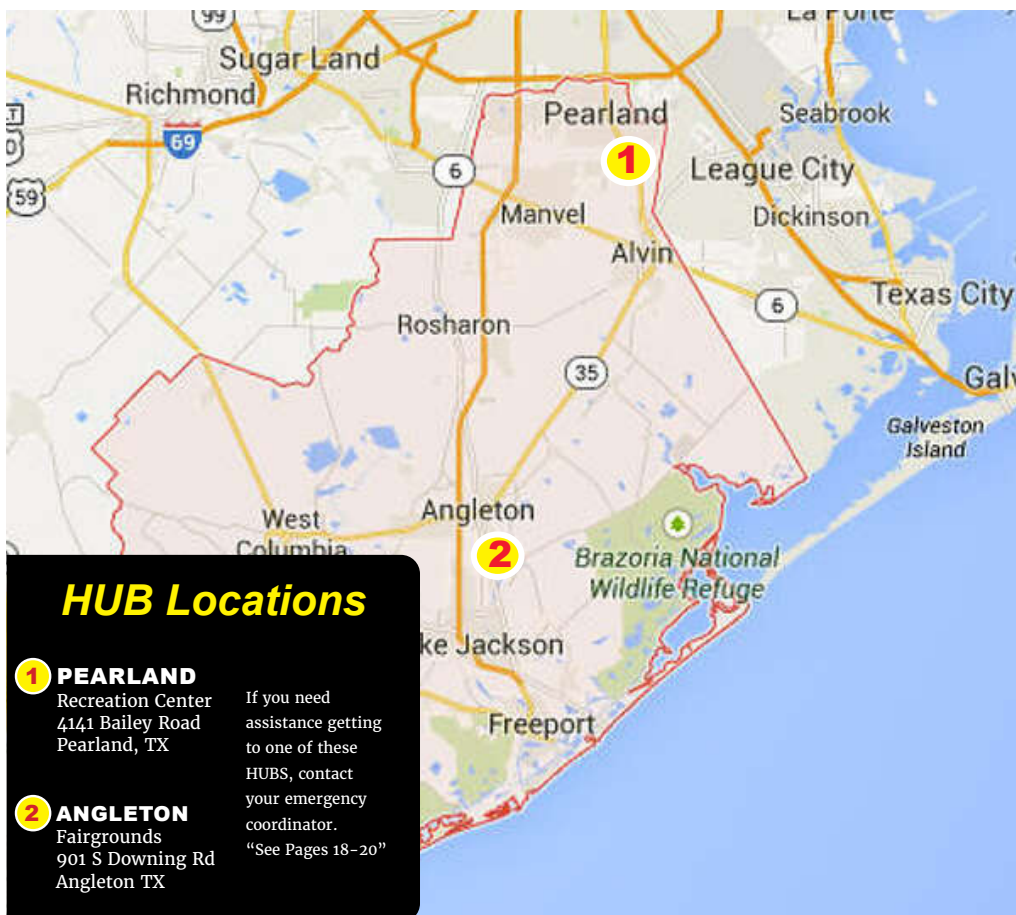
Evacuation Hubs in Brazoria County

Animal Evacuation on Public Transportation

- Only non-aggressive household pets will be permitted. No reptiles or farm animals.
- Up to two pets per household will be allowed on the bus. If you feel you **MUST** take more than two pets, please contact your city's local emergency manager **BEFORE** an evacuation is called.
- All animals **MUST** be transported and housed in a sturdy plastic or metal cage/transport device. No cardboard or partly enclosed devices will be allowed.
- Animals **MUST** remain secured in the travel device at **ALL TIMES** while on the bus and at the HUB.
- Pets **MUST** have current rabies shot records.
- Owners are responsible for supplying food, water and medication for their animals.
- We are not liable for any losses or injuries to your animals while being evacuated.

Will my pet ride with me?

- HUB Coordinators have final say over all pet transports.
- As a general rule, pets will be transported with the owner. However, if a situation dictates, they may be transported in a separate vehicle.



Severe Weather

Thunderstorms

A thunderstorm is contains lightning caused by unstable atmospheric conditions. Thunderstorms may occur by themselves, in clusters, or in lines. So, it is possible for several thunderstorms to affect one location in the course of a few hours.

Severe thunderstorms can bring heavy rains, strong winds, hail, lightning, and tornadoes. To protect yourself in a severe thunderstorm, get inside a sturdy building away from windows and stay tuned to a battery-operated radio for weather information.

Lightning


Do's and Don'ts

Do

Go Inside When You Hear Thunder or See Lightning!

Find a Sturdy House, Building, Car With A Hard-Top Roof

Stay Indoors For at Least 30 Minutes After You Last Hear Thunder




Don't

Retreat to Dugouts, Sheds, Pavilions, Picnic Shelters or Other Small Structures

Use or Touch Electronics, Outlets, or Corded Phones

Go Under or Near Tall Trees, Swim or Be Near Water, Be Near Metal Objects or Windows



weather.gov/lightning

Know The Difference

Advisory

Weather hazard is occurring, imminent, or likely. Could cause significant inconvenience. **Use Caution.**

Watch

Risk of weather hazard in the near future. Could pose a threat to life/property. **Have a Plan of Action.**

Warning

Weather hazard is occurring, imminent, or likely. Poses a threat to life/property. **Take Protective Action.**

Flooding

Floods are the most common natural disaster in the United States. Failing to evacuate flooded areas or entering flood waters can lead to injury or death. If you are under a flood warning:

- Find safe shelter right away.
- Do not walk, swim or drive through flood waters—Turn Around, Don't Drown!
- Six inches of moving water can knock you down, and one foot of moving water can sweep your vehicle away.
- Stay off bridges over fast-moving water.

Depending on the type of flooding:

- Evacuate if told to do so.
- Move to higher ground or a higher floor.
- Stay where you are.

Visit www.ready.gov/floods for more information.

Downed Power Lines

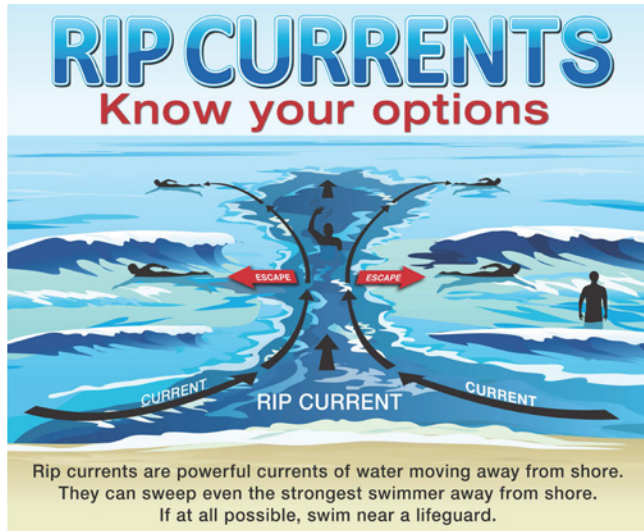
Always assume that a fallen power line is live, and follow these guidelines:

- Call 9-1-1 immediately to report a fallen power line.
- Avoid touching the downed line with your hand or an object, such as a stick, broom or pole.
- Avoid driving over a fallen power line.
- Keep children and pets away from fallen electric lines.



ALL HAZARD INFORMATION

Severe Weather Continued



IF CAUGHT IN A RIP CURRENT

- ◆ Relax, rip currents don't pull you under.
- ◆ Don't swim against the current.
- ◆ Swim out of the current, then to shore.
- ◆ If you can't escape, float or tread water.
- ◆ If you need help, yell or wave for assistance.

SAFETY

- ◆ Know how to swim.
- ◆ Never swim alone.
- ◆ If in doubt, don't go out.
- ◆ Swim near a lifeguard.

More information about rip currents can be found at the following websites:

weather.gov/safety/ripcurrent/
usla.org



Practice HEAT SAFETY Wherever You Are

Heat related deaths are preventable. Protect yourself and others from the impacts of heat waves.

weather.gov/heat

<p>Job Sites Stay hydrated and take breaks in the shade as often as possible</p>	<p>Indoors Check up on the elderly, sick and those without AC</p>
<p>Vehicles Never leave kids or pets unattended - LOOK before you LOCK</p>	<p>Outdoors Limit strenuous outdoor activities, find shade, and stay hydrated</p>

Four P's to Freeze Safety

- **People** – Check on your neighbors, especially those needing extra assistance during cold weather.
- **Pets** – Make sure your furry friends have a warm place to stay during the cold.
- **Plants** – Cover sensitive vegetation to avoid frost damage.
- **Pipes** – Insulate your pipes to prevent them from freezing and bursting.

DURING COLD WEATHER REMEMBER THE 4 P'S

<p>PEOPLE</p> <p>Dress Warm and Check on Neighbors and The Elderly.</p> 	<p>PETS</p> <p>Animals Should Be Brought Indoors or Provided a Warm Place to Sleep.</p> 	<p>PLANTS</p> <p>May Need to be Covered or Brought Inside to Avoid Frost Damage.</p> 	<p>PIPES</p> <p>Cover or Wrap Pipes Exposed to Cold Temperatures.</p> 
--	---	---	--

After a Hazardous Materials Incident

Hazardous materials can include flammable and combustible substances, poisons, and radioactive or explosive materials. Emergencies can happen at any time where you live, work or play. You are at risk when hazardous materials are released in harmful amounts.

If you are within an area where hazardous materials are released, move to a safe location immediately, preferably upwind from the release, and notify emergency personnel.

During a hazardous material emergency:

- Act quickly and move to a safe area upwind if possible.
- Notify emergency personnel about the hazardous material.
- Follow specific instructions from local authorities or emergency personnel.

If you are within the release area and asked to shelter in place, follow specific instructions from local authorities and emergency personnel. You might be instructed to do the following:

- Go inside your home, vehicle or building.
- Close all windows and doors.
- Turn off furnace, cooking appliances and air conditioners.

Remember:

- Act quickly.
- Notify emergency personnel.
- Follow all specific safety instructions



CAER

COMMUNITY AWARENESS & EMERGENCY RESPONSE

Founded in 1985, Community Awareness & Emergency Response (**CAER**) is an organization made up of more than 20 manufacturing companies. **CAER** serves the Brazosport and surrounding areas, promoting emergency planning in the event of an industrial emergency. **CAER** works to serve as the vital link between the community and industry.

FAST FACTS

Brazosport **CAER** was the first industrial alert program of its kind in the nation.

The **CAER** ALERT SYSTEM consists of 11 strategically placed sirens in the Brazosport area that are tested each Monday at 12:10 pm for 60 seconds.

If you hear a siren at any other time, shelter in place as a precaution and contact **CAER** at 979-238-2237.

Sign up for alerts about industrial incidents requiring action from the community by visiting www.brazosportcaer.com and register for Code Red, a mobile, geo-targeted alert system.



www.BRAZOSPORTCAER.COM

979.238.CAER



VOLUNTEER OPPORTUNITIES

AMATEUR RADIO



When your family's lives may be at risk...
What communication system do YOU want to have?

Amateur Radio Emergency Service Make friends and enjoy the challenge!

- Get your Ham Radio License.
- Practice with on-the-air "nets" or networks.
- Participate in public events.
- Volunteer and help others!
- Communication for disaster preparedness.
- Getting the message through for your friends and your family.

Website: www.brazoriacountyares.org

Contact: info@brazoriacountyares.org



HOW CAN I HELP?

BRAZORIA COUNTY CITIZEN CORPS NEEDS YOU!

In large emergencies, first responders can be quickly overwhelmed. Citizens on scene may need to take action to help save lives.

Citizen Corps will train you to prepare yourself, your family, and your neighbors for disasters.

The Brazoria County Citizen Corps has several key missions:

- Initial Neighborhood Response
- Staff Evacuation Hubs for an evacuation
- Help staff the Emergency Management Call Center
- Staff shelters during disasters
- And MUCH MORE!

ALL TRAINING IS FREE!

Positions for everyone! Great for groups
and organizations! Sign up today!

See our calendar at:

www.homelandpreparedness.org
or contact Homeland Preparedness
Project at:

info@homelandpreparedness.org
Or call 281-844-3653.



If you are interested in volunteering and/or
supporting Salvation Army, Freeport Corps give
them a call at (979) 233-5420,
or drop by at 1618 N. Avenue J, Freeport, TX



Storm Spotter Program

The National Weather Service issues forecasts and warnings for the protection of life and property. Severe weather reports from weather spotters are critical for the issuance of accurate and timely warnings and thus contribute to public safety. Each year the NWS offers numerous weather spotter training sessions. Spotters are trained at how to report hazards such as hail, damaging winds, funnel clouds, tornadoes and flooding and how to identify cloud formations that indicate severe thunderstorms. The training is free, runs about two hours and is great for anyone who is interested in weather and wants to provide information directly to the National Weather Service. For more information on this program and to register for a course in your area visit www.weather.gov/SKYWARN.



Returning Home



Safety Tips for Your Return

Just as you had a plan to evacuate, you will want to be prepared to return home after officials give the all clear.

- Find out if it is safe to enter your community or neighborhood. Follow advice of local authorities.
- Check city and/or county websites.
- Check reliable social media sites. Ex. Brazoria County Facebook, Instagram, and Twitter.
- Have cash with you. ATM's may not work and stores may not be able to accept credit or debit cards.
- Bring supplies such as flashlights, batteries, bottled water and nonperishable foods in case utilities are out.
- Create back-up communication plans with family and friends in case you are unable to call from affected area.

- Plan for delays when traveling. Bring extra food, water, pillows, blankets and other items. Keep the fuel tank of your vehicle as full as possible.
- Carry a road map to help you route.
- Understand that recovery takes time. Focus on the positive and have patience.
- If possible, leave children and pets with a relative or friend. If not, keep them away from hazards and floodwater.
- Beware of rodents, snakes, insects and other animals that may be on your property or in your home.

www.fema.gov/fact-sheet/tips-returning-home-safely-after-disaster

Items to bring when returning home

- | | |
|--|---|
| <input type="checkbox"/> Government-issued photo ID and proof of address | <input type="checkbox"/> Long sleeved shirts, long pants, sturdy waterproof boots and work gloves |
| <input type="checkbox"/> Important phone numbers | <input type="checkbox"/> Flashlight, portable radio, and extra batteries |
| <input type="checkbox"/> Bottled water and non-perishable foods | <input type="checkbox"/> Cameras for photos of damage for insurance claims |
| <input type="checkbox"/> First aid kits | <input type="checkbox"/> Tarp(s) to cover roof damage and control leaks |
| <input type="checkbox"/> Cleanser/hand cleaning gel for personal use | |
| <input type="checkbox"/> Hygiene products and toilet paper | |
| <input type="checkbox"/> Insect repellent and sunscreen | |

WELL WATER TESTING AFTER A FLOOD

Water wells that are inundated with flood water may be contaminated with bacteria, which can make you sick. Sources of bacteria may include a septic system and fecal matter from wildlife and domestic animals. Additionally, chemical contaminants can enter a well making the water unsafe to drink.

Well water can be tested at the Brazoria County Water Lab located at 409 East Orange, Angleton, Texas 77515. Water sample must be collected in a container from the lab.

Portable Generator Safety

When power has not been restored many people turn to generators for temporary power. Before using a portable generator know the risks to insure safe and proper use.

- Always keep generators at least 15 feet from your home and not in any closed or covered area.
- Always plug electrical appliances directly into the generator using the manufacturer's supplied cords or extension cords that are grounded (3-pronged).
- Inspect the cords to make sure they are fully intact and not damaged.
- Do not overload a generator.
- Make sure a generator is properly grounded.
- Keep a generator dry.
- Never refuel a generator while it is still on or hot.

What to do after a flood

Returning home after a flood can be dangerous and difficult. Use caution when entering a disaster area, and be ready to deal with the conditions at hand.

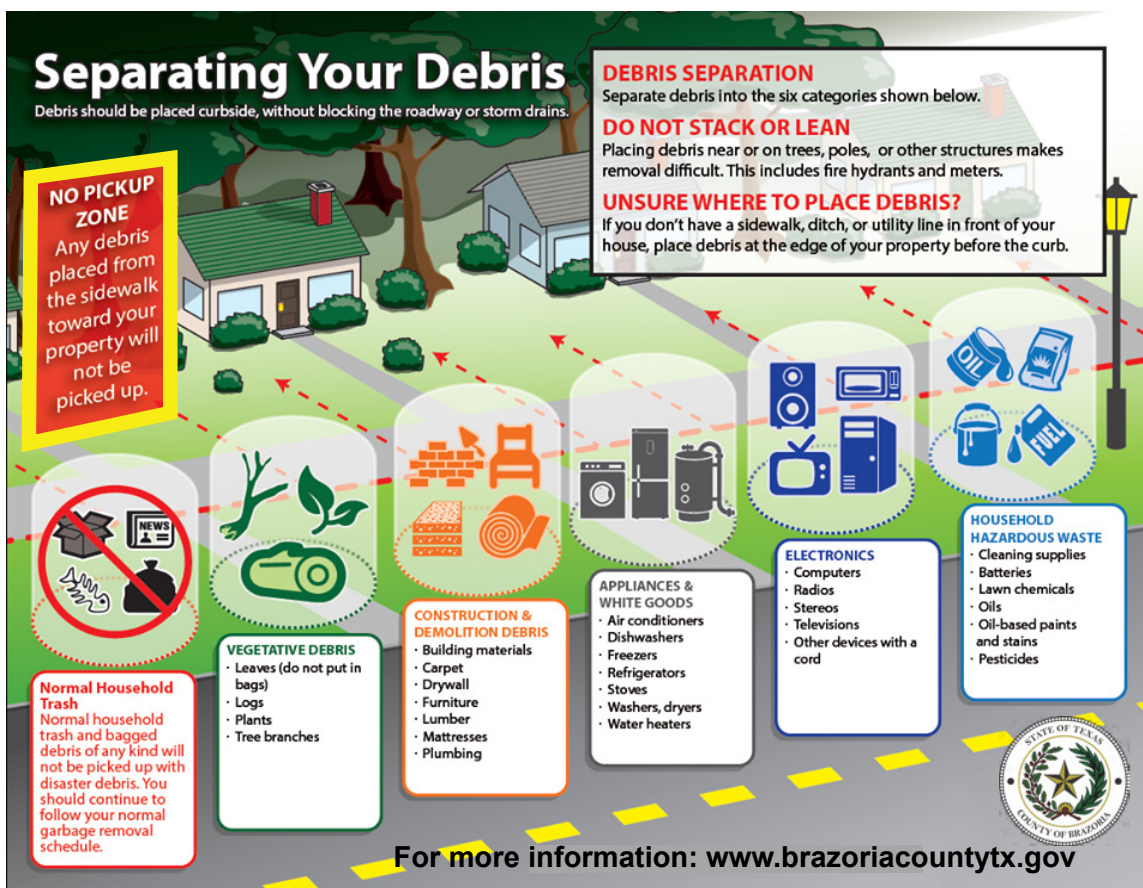
- Return home only when authorities say it is safe.
- Be aware of areas where floodwaters have receded and watch out for debris, snakes, fire ants, alligators, etc.
- Flood waters often erode roads and walkways.
- Do not wade through flood waters.
- Do not attempt to drive through areas that are still flooded.
- Avoid standing water as it may be electrically charged from underground or downed power lines.
- Photograph damage to your property for insurance purposes.

Turn Around. Don't Drown!

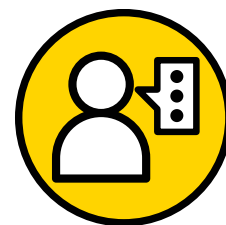


www.ready.gov/floods

Separating Your Disaster Debris



COMMUNICATION AND CONTACT INFORMATION



brazoriacountytx.gov



Search for
Brazoria County Emergency Mgmt." App.
Available on the App Store or Google Play.

Brazoria County



Emergency Management
pio@brazoria-county.com
24 Hour Hotline 979-864-1064

www.brazoriacountytx.gov

CAER



979-238-CAER (2237)
www.brazosportcaer.com

United Way of Brazoria County



979-849-9402
www.uwbc.org

Red Cross



1-800-RED CROSS (733-2767)
www.redcross.org/local/texas/gulf-coast

Salvation Army



979-233-5420
www.southernusa.salvationarmy.org/texas-freeport

Alvin



Emergency Manager 281-388-4363
City Hall 281-388-4200
Mayor 281-388-4275
City Manager 281-388-4230
Public Works 281-388-4325
CableAccess Channel Channel 16
RADIO KACC 89.7 FM
www.alvin-tx.gov

Angleton



Emergency Manager 979-849-4364 x 2137
City Hall 979-849-4364
Mayor 979-849-4364
City Manager 979-849-4364
Fire. 979-849-1265

www.angleton.tx.us

Bailey's Prairie



Emergency Manager 979-849-0134
Village Hall 979-849-0134
Mayor 979-849-0134
www.baileysprairie.org

Bonney

Emergency Manager/Mayor 281-595-2269
City Hall 281-595-2269
www.bonneytexas.gov

Brazoria



Emergency Manager 979-798-2489
City Hall 979-798-2489
City Manager 979-798-2489
24 hr. Emergency Info. Line 979-798-9131
www.cityofbrazoria.org

Brookside Village



Emergency Management 281-485-3048
City Hall 281-485-3048
Mayor 281-485-3048
Police Chief. 281-485-4844
www.brooksidevillage-tx.org

Clute



Emergency Management 979-265-9653
Police Department 24 Hr Info. 979-265-6194
City Hall 979-265-2541
City Manager 979-265-2541
www.clutetexas.gov

Danbury

Emergency Manager 979-480-7091
City Hall/Police 979-922-1551
Mayor 979-583-5733
City Secretary. 979-922-1551 ext. 4
Utility Department Emergency 979-799-5574
Fire Department 979-922-1176
Police Dispatch 979-864-2392

Freeport



Emergency Manager 979-233-2111
City Hall 979-233-3526
Police. 979-239-1211
City Information 979-258-KNOW (5669)

www.freeport.tx.us

Hillcrest



Mon - Thurs 8 AM - 4 PM
Emergency Management 713-298-6487
City Office/City Secretary 281-456-0577
Mayor Pro Tem. 281-850-3386
City Marshal 832-221-5961

www.hillcrestvillagetx.gov

Holiday Lakes

Mon Wed Thurs & Fri 1 - 5 PM, Tues 1 - 7 PM
Mayor 979-849-1136
City Secretary. 979-849-1136
Police Chief. 979-849-3163

www.holidaylaketexas.com

Iowa Colony



Emergency Manager 281-369-3444
City Hall 281-369-2471
Mayor 281-369-2471
City Secretary. 281-369-2471
Police Chief. 281-369-3444

www.iowacolonytx.gov

Jones Creek



Marshal/Emergency Mgr. 979-292-6393
City Hall 979-233-2700
Mayor 979-233-2700
City Admin. 979-233-2700
Marshal's Dept 979-233-3091
Fire Chief. 979-201-3594

www.villageofjonescreektexas.com

Lake Jackson



Emergency Manager 979-415-2500
City Hall 979-415-2400
Police Department 979-415-2700
Cable Access Channel Channel 16

www.lakejackson-tx.gov

Liverpool

Emergency Manager 281-581-2342
Mayor 281-581-2342
City Secretary. 281-581-2342
Police Chief. 281-581-2233

www.cityofliverpooltexas.com

Manvel



City Manager/EMC 281-489-1212
Mayor 281-489-0630
Police Chief 281-489-1212
Fire Marshal 281-489-0630
Fire Chief 281-692-0279
EMS Director 281-519-8779

www.cityofmanvel.com

Oyster Creek



Emergency Manager 979-233-8481
Mayor/City Hall 979-201-3543
City Administrator 979-233-0243
Fire Department 979-233-8481
Police Department 979-233-8481

www.cityfofoystercreek.org



Pearland



Emergency Manager 281-997-4648
City Hall 281-652-1600
Mayor 281-652-1780
City Manager 281-652-1657
Police Department 281-997-4100
Cable Access Channel Channel 16/99 UVerse
www.pearlandtx.gov

Quintana

Mon. - Fri. 8 AM- 4:30 PM. 979-233-0848
Mayor 979-233-0848
City Administrator 979-233-0848
Water Emergency. 979-292-4384
979-388-5988
www.quintanatx.org

Richwood



Emergency Manager 979-265-2640
City Hall 979-265-2082
Mayor 979-265-2082
City Manager 979-265-2082
www.richwoodtx.gov

Surfside



Emergency Coordinator. 409-502-3431
City Hall 979-233-1531
Fire Department 979-233-5926
Police Chief 979-233-1531 ext. 109
EMS 979-233-1531 ext. 112
www.surfsidetx.org

Sweeny



City Manager/City Hall 979-548-3321
Police Department 979-548-3112
Fire Department 979-548-3320
Emergencies 979-548-3111 or 911
After Hours PW Calls/Gas Leaks . . . 979-429-6171
www.sweenytx.gov

West Columbia



City Mgr./Emergency Mgr. 979-345-3123
Emergency Operations Manager. . . . 979-345-5121
City Hall 979-345-3123
Police Department 979-345-5121
CEMS Office & Director 979-345-2390
Volunteer Fire Station 979-345-3416
Volunteer Fire Chief 979-248-7290
www.westcolumbiatx.org

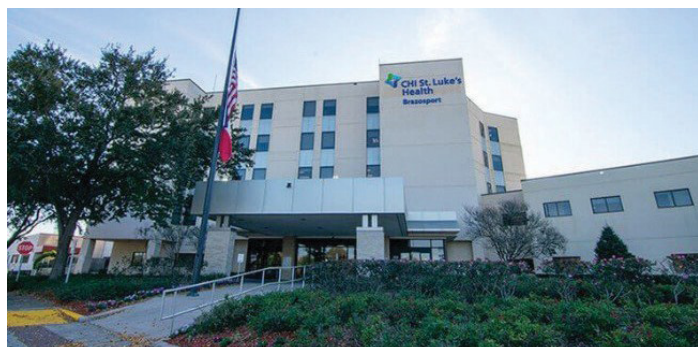
Other Useful Numbers

School Districts and Colleges

Alvin ISD 281-388-1130
www.alvinisd.net
Angleton ISD 979-864-8000
www.angletonisd.net
Brazosport ISD 979-730-7000
www.brazosportisd.net
Columbia-Brazoria ISD 979- 799-1700
www.cbisd.com
Damon ISD 979-742-3457
www.damonisd.net
Danbury ISD 979-922-1218
www.danburyisd.org
Pearland ISD 281-485-3203
www.pearlandisd.org
Sweeny ISD. 979-491-8000
www.sweenyisd.org
Alvin Community College. 281-756-3500
www.alvincollege.edu
Brazosport College 979-230-3000
www.brazosport.edu
U of H - Pearland Campus 281-212-1700
www.uhcl.edu/pearland

Hospitals

UTMB Health Angleton Campus. 979- 849-7721
132 E. Hospital Drive Angleton, TX 77515
CHI St. Luke's Brazosport Medical Ctr . . 979-297-4411
100 Medical Drive Lake Jackson, TX 77566
Sweeny Community Hospital. 979-548-3311
305 N. McKinney St Sweeny, TX 77480
Memorial Hermann Pearland. 713-413-5000
16100 South Freeway Pearland, TX 77584
Pearland Medical Center 713-770-7000
11100 Shadow Creek Parkway Pearland, TX 77584



Updated 2025

Disaster Guide

NOTES

This image shows a blank sheet of white paper with horizontal ruling lines. The lines are evenly spaced and run across the width of the page. There are no margins, text, or other markings on the paper.

Hurricane Forecasting

Cone of Error

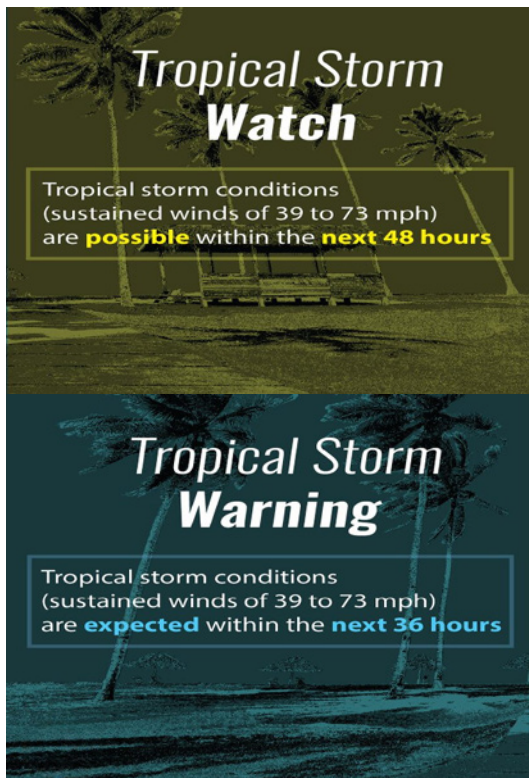
You may have heard meteorologists talk about a Cone of Error and show a cone-shaped graphic. The Cone of Error is a visual aid used to show the anticipated path of a storm three to five days into the future.

All locations within the Cone of Error are at risk and preparations for landfall should be made across the entire cone area. Most of the time, a storm will make landfall within the Cone of Error, and only one-third of the time a storm will make landfall outside of the cone.

A storm's effects are not isolated to one particular place and tend to have far-reaching impacts hundreds of miles away from the location of landfall.



Hurricane Harvey Cone of Error (NOAA/National Weather Service)



Tropical Storm Watch & Warning (NOAA)

Watches & Warnings

The National Hurricane Center begins issuing detailed storm information to threatened residents 48 hours in advance of an approaching tropical storm or hurricane. It is important to know the difference between “watches” and “warnings” to help you and your family be prepared.

- Tropical Storm Watch – Tropical storm conditions pose a potential threat to an area within 48 hours.
- Tropical Storm Warning – Tropical storm conditions are expected to affect an area within 36 hours.
- Hurricane Watch – Hurricane conditions are possible within 48 hours. You and your family should activate your disaster preparedness plan and take measures to secure your home and property.
- Hurricane Warning – Hurricane conditions are expected within 36 hours. You and your family should be completing storm preparations and begin to shelter in place or move to a safer location.

